

PosiNet™

Back Office Data Management Software



With Posinet Web, Fleet Data Is Actionable

- Email alerts and exception notifications provide instant information on the health and treatment of the fleet so issues can be corrected before they cause productivity losses. Alerts can be selected by the user to control information volume and flow.
- Historical and predictive reports provide concrete information for training your operators, optimizing the distribution of vehicles throughout your facility, and planning for future orders or expansions.
- Real time views of your fleet allow you to immediately identify compliance problems, explore causes, and provide on-the-spot guidance to your operators.

With Posinet Web, Fleet Data Is Automatic

- Charger and battery data are automatically downloaded from the charger and uploaded to the PosiNET Data Center for processing. No manual download procedures are required.
- Twenty-five pre-defined reports are available without even touching a button. Scheduled weekly, monthly or annual reports on fleet activities are sent directly to any Internet-accessible email account.
- User- level filtering provides only the most useful reports based on user roles and responsibilities.

With Posinet Web, Fleet Data Is Accessible

- Web-based system architecture allows access to operations information from any place in the world.
- Simple, intuitive controls allow the user to rapidly navigate to the information they need.
- Optional third-party access to fleet data can dramatically improve service response time. Battery and charger service personnel can review data in order to identify issues, remotely diagnose, and provide fast solutions, minimizing downtime and maximizing productivity.

Key Features:

- Extensive reporting capabilities
- Ability to download fleet info from the internet.
- Intuitive user interface
- Delivers weekly exception reports and lifetime battery historical reports
- Real time alerts for early issue detection
- Prevents long term battery damage before it is too late
- Key email alerts: Battery Low SOC | High Battery Temperature | Battery Low Water

Full suite of battery and charger data analysis

PosiCharge™ PosiNET is a comprehensive fleet management tool for fast charge operations. Built on a unique system architecture that links all fast chargers into a single network, PosiNET automatically captures and analyzes operational data, and then presents actionable fleet usage and warranty compliance reports, thereby empowering operations professionals to manage their fleet effortlessly.



Accurate, real-time info for maximizing fleet performance

Detailed daily tracking reports, weekly exception reports and lifetime statistical analysis provide easy visibility to battery health across the entire fleet, helping identify potential issues before they become larger problems and simplifying warranty compliance.

Figure 1. OPERATIONS STATUS REPORT – Provides a simple summary of the battery operation and maintenance issues for the past week.

Battery ID	Vehicle ID	Rated Capacity	EQ Complete	SOC	Total Plugs	Cumul Chrg	Total Chrg	Total Disch	Max Temp	Average Temp	Days High Temp Exts
1	0000214	1,000	●	41	41	10.51	4.021	4.571	●	102.2	0
2	0000217	1,000	●	38	46.43	6.934	5.939	●	●	122.0	2
3	0000398	0000313	750	●	33	14.72	1.428	1.521	●	73.4	0
4	0000239	0000106	1,000	●	36	29.39	3.479	3.271	●	107.6	0
5	0000314	0000111	1,000	●	23	18.93	3.497	3.442	●	91.4	0
6	0000318	0000110	1,000	●	40	47.43	6.219	4.602	●	120.2	0
7	0000319	0000122	1,000	●	37	28.18	3.626	5.126	●	102.2	0
8	0000320	0000112	1,000	●	38	32.76	4.440	4.208	●	102.2	0
9	0000321	0000103	1,000	●	35	29.28	5.591	5.039	●	111.2	0
10	0000322	0000121	1,000	●	40	36.90	6.339	5.688	●	116.4	1
11	0000323	0000109	1,000	●	41	30.32	7.041	6.894	●	108.4	0
12	0000324	0000101	1,000	●	37	30.13	5.741	5.648	●	104.0	0
13	0000325	0000104	1,000	●	38	24.68	5.705	5.322	●	102.0	0
14	0000326	0000123	1,000	●	44	34.92	6.224	5.191	●	111.2	0
15	0000327	0000107	1,000	●	43	28.15	6.466	6.205	●	111.2	0
16	0000328	0000106	1,000	●	3	8.50	1.404	7.14	●	84.2	0
17	0000497	0000123	1,000	●	38	27.50	5.412	5.003	●	109.4	0

Figure 3. BATTERY TEMPERATURE CHART – Provides ability to review battery temperature in detail for any time period in the history of the battery.

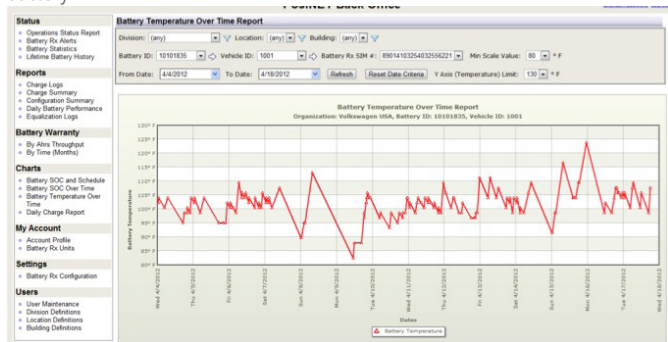


Figure 5. LIFETIME BATTERY STATISTICS – Complete history of the battery, can be used to confirm warranty compliance.

Battery		Charge		Equalization	
Battery ID	0000269	Total Charge Events	5,357	Total Equalization hours	744
Vehicle ID	0000007	Cumulative Amp-hours Charged	552,969 Ahrs	Total Complete Equalization events	81
BATTERY WG Serial Number	(not entered)	Cumulative kWhrs Charged	31,976 kWhrs	Days since last Complete Equalization	1
Firmware Revision	06.00.09.15	Total SOC events below 20%	621	Max Rec Amp-hours between Equalizations	6 days
Installation Date	2/4/2013 2:26 PM			Last Complete EQ Date	4/5/2015 5:30 AM
Days in Operation	632				
Data as of	4/6/2015 11:59 PM				

Voltage		Discharge		Run Time / Key Time	
Number Low Voltage Events	373	Cumulative Discharge Amp-hours	520,711 Ahrs	Cumulative Run Time	5,448 hr
Max Recorded Voltage	44.9 V	Cumulative Discharge kWhrs	24,869 kWhrs	Cumulative Key-On Time	6,275 hr
Max Recorded Voltage	63.9 V			Cumulative Key-Off Time	8,256 hr
Nominal Battery Voltage	48 V			Cumulative Charge Time	3,803 hr
				Cumulative Idle Time	5,917 hr

Temperature		Battery Life / Capacity		Water	
Days High Temperature Events	5	Remaining Battery Life (based on warranty)	22 month(s)	Number of Days with Low Water	422

Figure 2. BATTERY SOC CHART – Provides ability to review battery SOC in detail for any time period in the history of the battery.

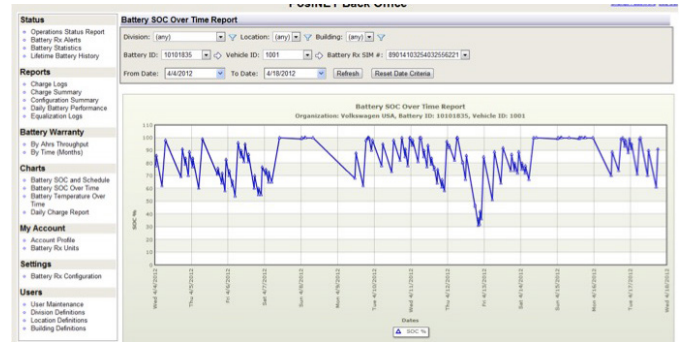


Figure 4. DAILY CHARGE REPORT – Provides ability to review daily battery charge Ah's and Plug In compliance.

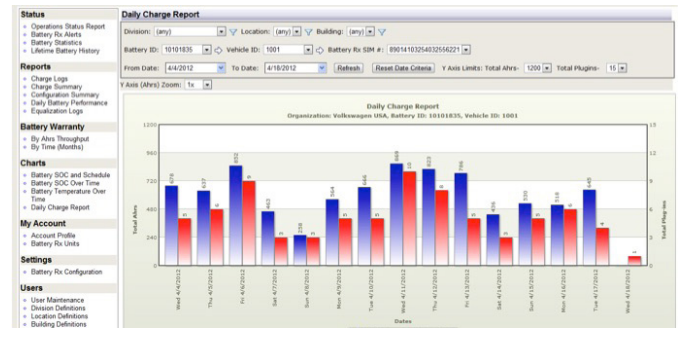
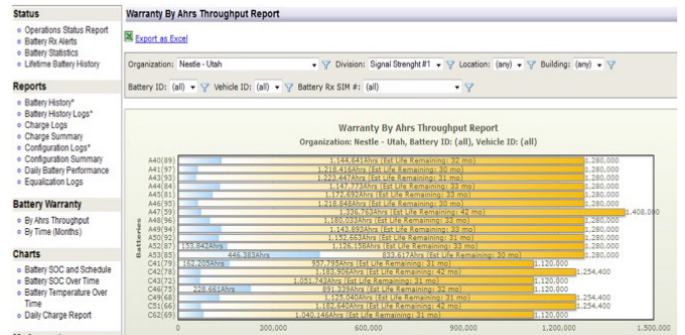


Figure 6. BATTERY WARRANTY – Ah Throughput comparison of Battery Fleet.



PosiCharge is a product line of Webasto Charging Systems, Inc. 1333 S. Mayflower Avenue, Suite 100 Monrovia, CA 91016 USA +1 (888) 767-4242