

# PosiNET

Back Office Data Management Software

**PosiCharge™ PosiNET** is a comprehensive battery management tool for fast charged operations. Built on a unique system architecture that links all fast chargers into a single network, PosiNET automatically captures and analyzes operational data, and then presents actionable fleet usage and warranty compliance reports, thereby empowering operations professionals to manage their fleet effortlessly.

Detailed daily tracking reports, weekly exception reports and lifetime statistical analysis provide easy visibility to battery health across the entire fleet, helping identify potential issues before they become larger problems and simplifying warranty compliance.



## 1 WITH POSINET WEB, FLEET DATA IS ACTIONABLE

- » Email alerts and exception notifications provide instant information on the health and treatment of the fleet so issues can be corrected before they cause productivity losses. Alerts can be selected by the user to control information volume and flow.
- » Historical and predictive reports provide concrete information for training your operators, optimizing the distribution of vehicles throughout your facility, and planning for future orders or expansions.
- » Real time views of your fleet allow you to immediately identify compliance problems, explore causes, and provide on-the-spot guidance to your operators.

## 2 WITH POSINET WEB, FLEET DATA IS AUTOMATIC

- » Charger and battery data are automatically downloaded from the charger and uploaded to the PosiNET Data Center for processing. No manual download procedures are required.
- » Twenty-five pre-defined reports are available without even touching a button. Scheduled weekly, monthly or annual reports on fleet activities are sent directly to any Internet-accessible email account.
- » User-level filtering provides only the most useful reports based on user roles and responsibilities.

## 3 WITH POSINET WEB, FLEET DATA IS ACCESSIBLE

- » Web-based system architecture allows access to operations information from any place in the world.
- » Simple, intuitive controls allow the user to rapidly navigate to the information they need.
- » Optional third-party access to fleet data can dramatically improve service response time. Battery and charger service personnel can review data in order to identify issues, remotely diagnose, and provide fast solutions, minimizing downtime and maximizing productivity.

# POSINET®

## BACK-OFFICE DATA MANAGEMENT SOFTWARE

Full suite of battery and charger data analysis tool

Figure 1. OPERATIONS STATUS REPORT – Provides a simple summary of the battery performance and maintenance issues for the past week.

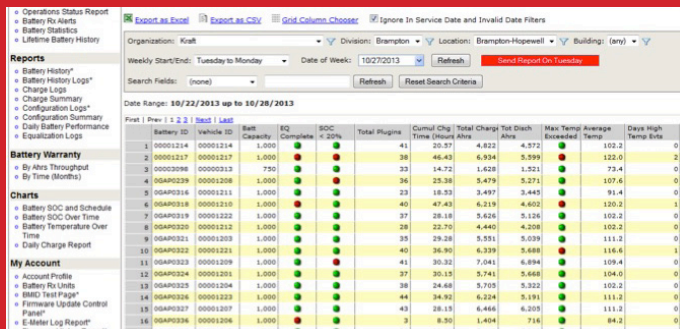


Figure 2. BATTERY SOC CHART – Provides ability to review battery SOC in detail for any time period in the history of the battery.

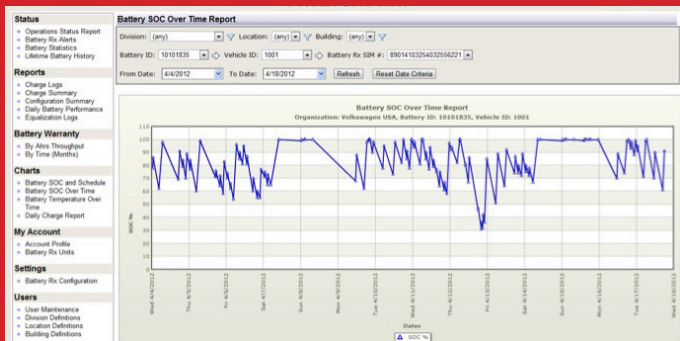
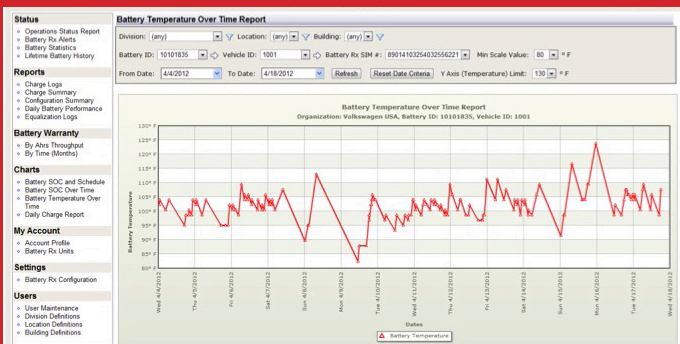


Figure 3. BATTERY TEMPERATURE CHART – Provides ability to review battery temperature in detail for any time period in the history of the battery.



- Extensive reporting capabilities
- Ability to download fleet info from the internet.
- Delivers weekly exception reports and lifetime battery historical reports
- Real time alerts for early issue detection
- Prevents long term battery damage before it is too late
- Key email alerts: Battery Low SOC | Battery Missed EQ | High Battery Temperature | Battery Low Water

Figure 4. DAILY CHARGE REPORT – Provides ability to review daily battery charge Ahs and Plug In compliance.

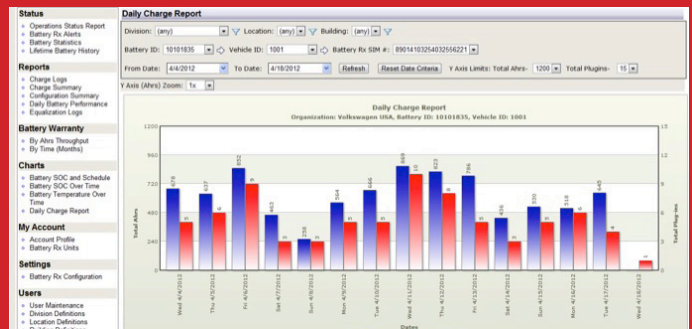


Figure 5. LIFETIME BATTERY STATISTICS – Complete history of the battery, can be used to confirm warranty compliance.

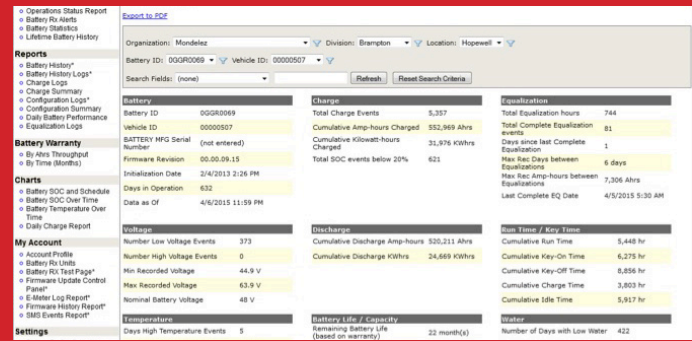


Figure 6. BATTERY WARRANTY – Ah Throughput comparison of Battery Fleet.

